

## RJ45 Sleeve Boot Strain Relief (Locking Boot) PC material

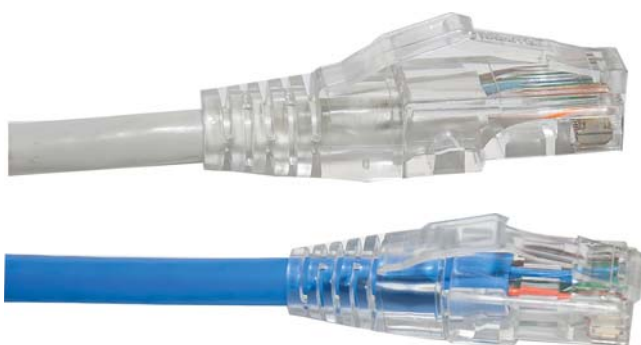


### Feature and Descriptions

- The plug covers are designed to protect RJ45 modular plugs and cables.
- Suitable for shielded and non-shielded modular plugs
- Flexible plastic molded
- Transparent color

### Specification

- High quality RJ45 Strain Relief Boots
- Use For Cat5/Cat5e/Cat6/Cat6a Cable
- Protect the plug latch from snagging when pulling cords
- Material:PC
- Temperature Range:-40°C~+70°C



Order Part Number as Below.

Part Number.	Descriptions
BM03255	Locking Plug Boot for CAT5E cable, Ø 5.5mm., Transparent Color
BM03260	Locking Plug Boot for CAT5E/CAT6 24AWG cable, Ø 6.0mm., Transparent Color
BM03265	Locking Plug Boot for CAT6 23AWG cable, Ø 6.5mm., Transparent Color